

# RYA

## SAFEGUARDING

---



### **CRANSLEY SAILING CLUB**

### **Welfare and Safeguarding**

### **Policy, Procedures and Guidance**

This Welfare document is based on updated guidance produced by the RYA Safeguarding Team in November 2023 and May 2024, provided for use by RYA Affiliated Clubs, Class Associations and Training Centres to ensure best practice is being reflected throughout clubs in the UK.

The policies, procedures and guidance in this document apply to all involved with CSC, including members, volunteers, sailors, stand-up paddleboarders, families, guests and other participants.

Note: Cransley Sailing Club (CSC) is run by volunteer members. Our club has no employees.

Version	1	Review Due	23/05/26
Published Date	28/05/24 CH	Reviewed	

# CRANSLEY SAILING CLUB

## Part 1: Welfare and Safeguarding Policy Statement

(also available as a separate document on the club's website)

This Welfare Statement is based on current guidance produced by the RYA Safeguarding Team for use at all RYA Affiliated Clubs, Class Associations and Recognised Training Centres.

The policies, procedures and guidance in this summary Statement apply to all involved with CSC, including members, volunteers, sailors, stand-up paddleboarders, families, guests and other participants. The full Welfare and Safeguarding Policy, Procedures and Guidance document and other information are available on the club's website.

**England and Wales:** This policy refers to a child as anyone under the age of 18 as defined by [the Children Act 1989](#) and an Adult at Risk as anyone aged 18 or over, who is in need of care or support, and who, because of those needs, is unable to always safeguard themselves as defined by [the Care Act 2014](#).

**Cransley Sailing Club is committed to safeguarding all children, young people and adults at risk taking part in its activities from abuse and harm and ensuring their wellbeing. Cransley Sailing Club recognises that the safety, welfare and needs of children, young people and adults at risk are paramount and that any person, irrespective of their age, disability, race, religion or belief, marital status, sex, gender identity, sexual orientation or social status, has a right to protection from discrimination, victimisation and abuse.**

**Cransley Sailing Club** takes all reasonable steps to ensure that, through safe recruitment, appropriate operating procedures, and training, it offers a safe and fun environment to everyone taking part in **Cransley Sailing Club** events and activities. **Cransley Sailing Club** recognises that it has a legal duty of care<sup>1</sup> to safeguard children, young people and adults at risk.

**Cransley Sailing Club** is committed to *minimising* risk and supporting programmes, events and individuals to deliver safe, positive and fun sailing and SUP experiences by creating a welcoming environment, both on and off the water, where everyone can have fun and develop their skills and confidence.

**Cransley Sailing Club** will treat everyone with respect, celebrate their achievements, listen to their views and experiences and provide opportunities for everyone to fulfil their potential and be their authentic selves.

**Cransley Sailing Club** will:

- Ensure that all individuals who work or volunteer with children, young people and adults at risk provide a positive, safe and enjoyable experience

---

<sup>1</sup> <https://www.gov.uk/government/publications/working-together-to-safeguard-children--2>

- Ensure that there is an RYA registered, Club Welfare Officer with the necessary skills and training who will take the lead in dealing with all safeguarding concerns with support from the RYA Safeguarding Team
- Ensure that the Club Welfare Officer name and contact details are known to all volunteers, members and participants
- Respond swiftly and appropriately to all complaints and concerns about poor practice or suspected abuse, referring to the RYA and external agencies as necessary
- Ensure that all information regarding safeguarding referrals is stored securely and confidentially
- Ensure that all those who work or volunteer with at risk groups have been recruited using safe recruitment practices and includes the appropriate criminal records disclosure checks
- Report any concerns raised involving RYA staff, volunteers and credential holders to the RYA Safeguarding Team
- Regularly review its safeguarding procedures and practices in the light of experience, to take account of legislative, social or technological changes or where there is a change of management as required.
- Cooperate where necessary with multi-agency investigations and enquiries relating to serious case reviews involving children, young people and adults at risk, if there is an association with the sport and or recreation

This policy will be reviewed by the *Cransley Sailing Club* committee at least every three years, or sooner if there are relevant changes to legislation or management.

*Cransley Sailing Club* recognises that **EVERYONE** has the right to be safeguarded and we must **ALL** take responsibility to ensure it.

**What to do if you are worried about the wellbeing\* of an adult, young person or child:**

- our **Club Welfare Officer Caroline Hughes** can be contacted in confidence on **07787 131698** or via [welfare.cransleysailingclub@gmail.com](mailto:welfare.cransleysailingclub@gmail.com)
- other local and national safeguarding agencies are listed in the full Welfare Policy on the CSC website or on the **RYA Safe & Fun posters** displayed in the clubhouse
- and **safeguarding resources and advice on the RYA website** are also available <https://www.rya.org.uk/about-us/policies/safeguarding>  
<https://www.rya.org.uk/about-us/policies/safeguarding/what-to-do-if-you-are-worried>

**\*If someone is in danger call 999 or 112, for the Police or an ambulance.**

# Part 2: Safeguarding Guidance

## Types of Abuse

### **1. Children and Young People<sup>2</sup>**

**Neglect:** Neglect is not meeting a child's basic physical or psychological needs. It can have a long-lasting impact on a child's health or development. In sport, examples of neglect could include a coach or supervisor repeatedly:

- failing to ensure children are safe
- exposing children to undue cold, heat or extreme weather conditions without ensuring adequate clothing or hydration
- exposing children to unnecessary risk of injury by ignoring safe practice guidelines
- failing to ensure the use of safety equipment
- requiring young people to participate when injured or unwell

**Physical Abuse:** When someone deliberately hurts a child causing physical harm it is called physical abuse. It may involve hitting, kicking, shaking, pushing, poisoning, burning, biting, scalding, drowning or any other method of causing non-accidental harm.

In sport, physical abuse may occur:

- if the nature and intensity of training or competition exceeds the capacity of the child's immature growing body
- where coaches encourage the use of drugs or harmful substances to enhance performance or delay puberty
- if athletes are required to participate when injured
- if the sanctions used by coaches involve inflicting pain

**Sexual Abuse:** Sexual abuse is when a child is forced or persuaded to take part in sexual activities. This may involve physical contact or non-contact activities and can happen online or offline. Children and young people may not always understand that they are being sexually abused.

In sport, coaching techniques which involve physical contact with children can create situations where sexual abuse can be disguised. An abusive situation can also develop if a person in a position of authority, such as a coach, was to misuse their power.

Contacts made within sport and pursued through other routes, such as social media, have been used to groom children for abuse. Sexual abusers can also groom protective adults and organisations to create opportunities for abuse to take place.

---

<sup>2</sup> The definitions of harm were obtained from the Child Protection in Sport Unit Website: <https://thecpsu.org.uk/help-advice/introduction-to-safeguarding/child-abuse-in-a-sports-setting/>

Child sexual exploitation (CSE) is a type of sexual abuse. When a child or young person is exploited, they're given things, like gifts, drugs, money, status and affection, in exchange for performing sexual activities. Children and young people are often tricked into believing they're in a loving and consensual relationship. This is called grooming. They may trust their abuser and not understand that they're being abused.

**Emotional Abuse:** Emotional abuse is the emotional maltreatment of a child, which has a severe and persistent negative effect on the child's emotional development. In sport, emotional abuse may occur if:

- children are subjected to repeated criticism, sarcasm, name-calling or racism
- a child is ignored or excluded
- children feel pressure to perform to unrealistically high expectations
- children are made to feel like their value or worth is dependent on their sporting success

**Bullying:** Bullying is when individuals or groups seek to harm, intimidate or coerce someone who is perceived to be vulnerable. It can involve people of any age and can happen anywhere, including at home, school, sports clubs or online.

Bullying encompasses a range of behaviours which are often combined. It might include physical, verbal or emotional abuse, or online cyberbullying.

In sport, bullying can occur based on a young person's sporting ability, body size or shape. It might include name-calling, offensive hand gestures, physical assault or exclusion from team activities.

## **2. Adults**

The Care Act recognises 10 categories of abuse that may be experienced by adults.

**Self-neglect:** This covers a wide range of behaviour, but it can be broadly defined as neglecting to care for one's personal hygiene, health, or surroundings. An example of self-neglect is behaviour such as hoarding.

**Modern Slavery:** This encompasses slavery, human trafficking, forced labour, and domestic servitude.

**Domestic Abuse:** This includes psychological, physical, sexual, financial, and emotional abuse perpetrated by anyone within a person's family. It also includes so-called "honour" based violence.

**Discriminatory Abuse:** Discrimination is abuse that centres on a difference or perceived difference, particularly with respect to race, gender, disability, or any of the protected characteristics of the Equality Act.

**Organisational Abuse:** This includes neglect and poor care practice within an institution or specific care setting, such as a hospital or care home, or in relation to care provided in one's own home. Organisational abuse can range from one off incidents to ongoing ill-treatment. It can be through neglect or poor professional practice because of the structure, policies, processes and practices within an organisation.

**Physical Abuse:** This includes hitting, slapping, pushing, kicking, restraint, and misuse of medication. It can also include inappropriate sanctions.

**Sexual Abuse:** This includes rape, indecent exposure, sexual harassment, inappropriate looking or touching, sexual teasing or innuendo, sexual photography, subjection to pornography or witnessing sexual acts, indecent exposure and sexual assault, or sexual acts to which the adult has not consented or was pressured into consenting.

**Financial or Material Abuse:** This includes theft, fraud, internet scamming, and coercion in relation to an adult's financial affairs or arrangements, including in connection with wills, property, inheritance or financial transactions. It can also include the misuse or misappropriation of property, possessions, or benefits.

**Neglect and Acts of Omission:** This includes ignoring medical or physical care needs and failing to provide access to appropriate health, social care or educational services. It also includes the withdrawing of the necessities of life, including medication, adequate nutrition, and heating.

**Emotional or Psychological Abuse:** This includes threats of harm or abandonment, deprivation of contact, humiliation, blaming, controlling, intimidation, coercion, harassment, verbal abuse, isolation, or withdrawal from services or supportive networks.

#### **Four Additional Types of Adult Harm:**

There are four additional types of harm that are not included in The Care Act 2014, but they are also relevant to safeguarding adults.

**Cyber Bullying:** Cyber bullying occurs when someone repeatedly makes fun of another person online, or repeatedly picks on another person through emails or text messages. It can also involve using online forums with the intention of harming, damaging, humiliating, or isolating another person. It includes various types of bullying, including racist bullying, homophobic bullying, or bullying related to special education needs and disabilities. The main difference is that, instead of the perpetrator carrying out the bullying face-to-face, they use technology to do it.

**Forced Marriage:** This is a term used to describe a marriage in which one or both of the parties are married without their consent or against their will. A forced marriage differs from an arranged marriage, in which both parties' consent to the assistance of a third

party in identifying a spouse. The Anti-Social Behaviour, Crime and Policing Act 2014 make it a criminal offence to force someone to marry.

**Mate Crime:** A “mate crime” is when “vulnerable people are befriended by members of the community who go on to exploit and take advantage of them” (Safety Network Project, ARC). It may not be an illegal act, but it still has a negative effect on the individual. A mate crime is carried out by someone the adult knows, and it often happens in private. In recent years there have been several Serious Care Reviews relating to people with a learning disability who were seriously harmed, or even murdered, by people who purported to be their friend.

**Radicalisation:** The aim of radicalisation is to inspire new recruits, embed extreme views and persuade vulnerable individuals to the legitimacy of a cause. This may be direct through a relationship, or through social media.

### **3. Other Safeguarding Considerations**

**Domestic Abuse:** Women’s Aid define domestic abuse as an incident or pattern of incidents of controlling, coercive, threatening, degrading and violent behaviour, including sexual violence, in most cases by a partner or ex-partner, but also by a family member or carer. It is very common. In most cases, it is experienced by women and is perpetrated by men. The Domestic Abuse Act 2021<sup>3</sup> is a new legislation which looks to Raise awareness and understanding about the impact of domestic abuse on victims and their families. It will work to further improve the effectiveness of the justice system in providing protection for victims of domestic abuse and bringing perpetrators to justice and strengthen the support for victims of abuse by statutory agencies.

**Extremism:** Extremism is vocal or active opposition to fundamental British values, including democracy, the rule of law, individual liberty and mutual respect and tolerance of different faiths and beliefs. (HM Government Prevent Strategy 2011<sup>4</sup>).

**Non-recent Abuse:** Abuse that occurred a period of time ago is sometimes referred to as non-recent. For example, an adult might speak about abuse that took place in their childhood.

**Self-Harm:** Self-harm is when someone deliberately hurts themselves. It can include cutting, burning, hitting or bruising, poisoning, scratching, hair-pulling or overdosing. Adults who self-harm aren’t usually trying to commit suicide or looking for attention (although self-harming can result in accidental death). Often, it is a way for the person to deal with overwhelming or distressing feelings and emotions. Self-harming can be an

---

<sup>3</sup> <https://www.gov.uk/government/publications/domestic-abuse-bill-2020-factsheets/domestic-abuse-bill-2020-overarching-factsheet>

<sup>4</sup> <https://www.gov.uk/government/publications/prevent-duty-guidance/revised-prevent-duty-guidance-for-england-and-wales>

indication of abuse, as some people use self-harm to cope with anxiety, stress and overwhelming emotions.

**Gangs & County Lines:** County lines is a form of criminal exploitation where urban gangs persuade, coerce or force children and young people to store drugs and money and/or transport them to suburban areas, market towns and coastal towns (Home Office, 2018). It can happen in any part of the UK and is against the law and a form of child abuse. Children and young people may be criminally exploited in multiple ways. Other forms of criminal exploitation include child sexual exploitation, trafficking, gang and knife crime.

**Forced Marriage:** A forced marriage is where one or both people do not or cannot consent to the marriage and pressure or abuse is used to force them into the marriage. Forced marriage is illegal in the UK and is a form of domestic abuse and a serious abuse of human rights.

**Female Genital Mutilation (FGM)<sup>5</sup>:** FGM is when a female's genitals are deliberately altered or removed for non-medical reasons. It's also known as 'female circumcision' or 'cutting' but has many other names. In the UK, this practice is illegal, but sadly still occurs and religious, social and cultural reasons are given to justify this practice.

## Glossary of Terms

**Abuse:** abuse covers every form of 'abuse', which differs between adults and children. Adult forms of abuse are sexual, emotional, psychological, material, financial, physical, discriminatory, organisational abuse and any acts of omission.

**Adult at Risk England:** any person aged 18 years and over who is or may be in need of community care services by reason of mental health issues, learning or physical disability, sensory impairment, age or illness and who is or may be unable to take care of him/herself or unable to protect him/herself against significant harm or serious exploitation.

**Case Management Group (CMG):** the Case Management Group is responsible for ensuring that all allegations, incidents, or referrals related to the safeguarding of children, young people and adults at risk are dealt with fairly and equitably within appropriate timescales. For the RYA the CMG consists of the Safeguarding and Equality Manager, Safeguarding Officer, relevant departmental manager/s representative from the legal team and the Independent Safeguarding Chair.

---

<sup>5</sup> Definition taken from the NSPCC Website



**Club Welfare Officer:** the designated individual within an affiliated club, recognised training centre or class association who holds the lead responsibility for safeguarding within their setting.

**Consent:** this is a term generally relating to adult safeguarding. Adults have a general right to independence, choice and self-determination including control over information about themselves. These rights can be overridden in certain circumstances, some examples include if a person lacks mental capacity, a crime has been committed, other people may be at risk, or the risk is unreasonably high.

**Disclosure:** disclosure is the process by which a child or adult at risk will let someone know that abuse is taking place. This may not happen all in one go and may be a slow process that takes place over a long period of time.

**Duty of Care:** the duty that rests upon an individual or organisation to ensure that all reasonable steps are taken to ensure the safety of any person involved in an activity for which that individual or organisation is responsible.

**LADO:** a Local Authority Designated Officer is the designated person within every Local Authority who is responsible for co-ordinating the response to concerns that an adult who works with children may have caused them or could cause them harm.

**Multi-Agency Meeting:** a multi-agency meeting may take place when a referral has been made to the Police or LADO regarding a child or adult at risk and is a key part of the investigation process.

**Position of Trust:** an adult is in a position of trust where a young person in their care has some dependency on them and there is an element of vulnerability involved.

**Referral:** a request for help from and/or for an individual from a public body.

**Referrer:** the person who refers a safeguarding concern to the safeguarding lead, police, LADO or Local Authority.

**Risk:** the probability of something (e.g., harm to a child) happening. The harsher the damage caused by it happening and the more likely the event, the greater the overall risk.

**Significant Harm:** the threshold that justifies compulsory intervention in family life in the best interests of children. Whether harm or likely harm suffered by a child is significant is determined by comparing the child's health or development with that which could reasonably be expected of a similar child.

**Subject of Concern (SoC):** a person who is believed to have acted in a way that has caused harm to a child, young person or adult at risk.

**Wellbeing:** Section 10 of the Children Act 2004 requires local authorities and other specified agencies to co-operate with a view to improving the wellbeing of children in relation to the five outcomes first set out in “Every Child Matters”.

**Young Person:** a young person is a term used to describe the interim period between childhood and adult, typically between the ages of 14 and 17.

## Safeguarding Legislation and Associated Policies

Safeguarding is governed by several different legislations and guidance. This will vary depending on the country within the UK.

	Key Legislation for Adults at Risk	Key Legislation for Children and Young People
<b>England</b>	<ul style="list-style-type: none"> <li>o <a href="#">The Care Act 2014</a></li> <li>o <a href="#">Care and Support Statutory Guidance (especially chapter 14) 2014</a></li> </ul>	<ul style="list-style-type: none"> <li>o <a href="#">The Children Act 1989</a></li> <li>o <a href="#">Keeping Children Safe in Education 2019</a></li> <li>o <a href="#">Working Together to Safeguard Children 2018</a></li> <li>o <a href="#">Children and Families Act 2014</a></li> <li>o <a href="#">The United Nations convention on the Rights of the Child 1992</a></li> </ul>

### Useful Contacts:

<b>Club Welfare Officer</b>	Caroline Hughes 07787 131698 <a href="mailto:welfare.cransleysailingclub@gmail.com">welfare.cransleysailingclub@gmail.com</a>
<b>Commodore</b>	<a href="mailto:commodore.cransleysailingclub@gmail.com">commodore.cransleysailingclub@gmail.com</a>
<b>Vice Commodore</b>	<a href="mailto:vicecommodore.cransleysailingclub@gmail.com">vicecommodore.cransleysailingclub@gmail.com</a>
<b>RYA HQ Safeguarding Team</b>	02380 012796 Ext 1 <a href="mailto:safeguarding@rya.org.uk">safeguarding@rya.org.uk</a>

### External Organisations:

NSPCC	<a href="https://www.nspcc.org.uk/">https://www.nspcc.org.uk/</a>
NSPCC Whistleblowing Advice Line	0800 028 0285 <a href="mailto:help@nspcc.org.uk">help@nspcc.org.uk</a>
Child Protection in Sport Unit	<a href="https://thecpsu.org.uk/">https://thecpsu.org.uk/</a>
Ann Craft Trust	<a href="https://www.anncrafttrust.org/">https://www.anncrafttrust.org/</a>
MIND	<a href="https://www.mind.org.uk/">https://www.mind.org.uk/</a>
Young Minds	<a href="https://www.youngminds.org.uk/">https://www.youngminds.org.uk/</a>
Hub of Hope	<a href="https://hubofhope.co.uk/">https://hubofhope.co.uk/</a>
Samaritans	<a href="https://www.samaritans.org/">https://www.samaritans.org/</a>
Emergency Services	999
Police Non-Emergency	101
NHS Non-Emergency	111

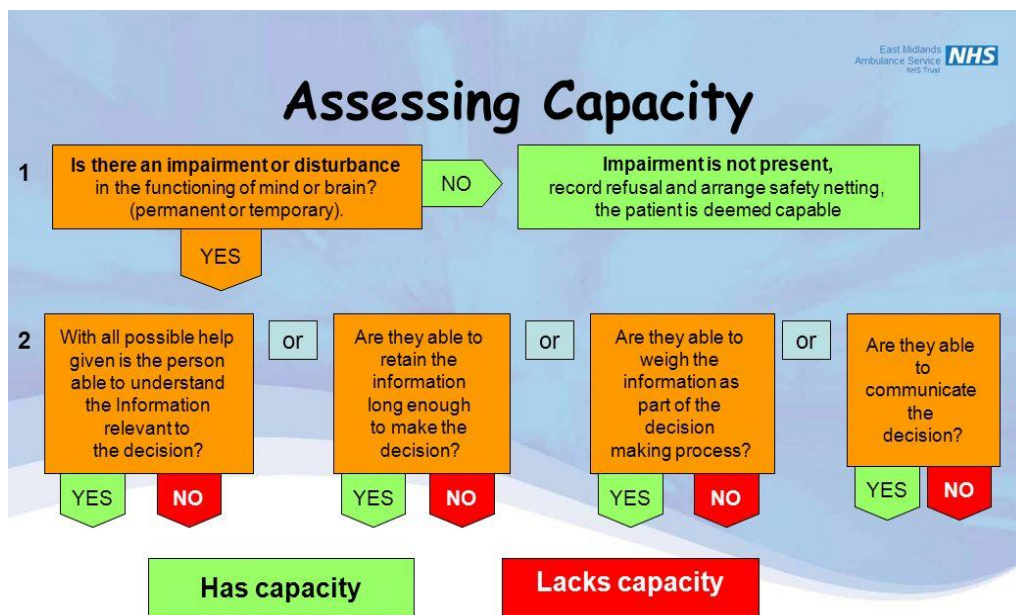
## Positions of Trust

Volunteers in designated 'Positions of Trust' at *Cransley Sailing Club* (e.g., instructors, safety boat drivers) have specific responsibilities for duty of care to U18s and adults at risk during organised sailing or SUP activities. The RYA 'Safe & Fun' online safeguarding course is recommended for all club volunteers in a 'position of trust' and is a requirement for new and renewing RYA Instructors, including Assistant Instructors aged 16+. (Note: an updated RYA 'Safe & Fun' interactive online course is expected to become available during 2024)

## Assessing Capacity

It is recognised by the RYA that an individual's perception of risk when on the water will depend on their experience, age and skills, but also on their mental capacity to make decisions. Restricted capacity can put the individual at undue risk and may unintentionally cause harm or risk to others.

This flowchart is useful for assessing a person's capacity to make decisions for themselves and on behalf of others.



**If the answer to 1 is YES and the answer to any of 2 is NO, then the person lacks capacity under the Mental Capacity Act 2005.**

If a person wishing to go out on the water is deemed to lack capacity, there is a duty to help them make a best interest decision about their participation in club activities.

Please contact the Club Welfare Officer, Principal, Commodore or the RYA Safeguarding Team if you have any questions about managing capacity or other safeguarding issues.

## Criminal Records Disclosure Checks

As part of its safe recruitment practices for volunteers, *Cransley Sailing Club* carries out criminal records disclosure checks using the RYA as an umbrella body on all volunteers aged 16 or over who are deemed to be in regulated activity. If a person is deemed to be in regulated activity, the Club Welfare Officer will initiate and carry out the required level of check.

Details of the Disclosure Barring Service (DBS) procedure followed at *Cransley Sailing Club* are included in Part 3 of this document.

## Part 3: Safeguarding Procedures

### 1. Safeguarding and Welfare Team Contact Details

<b>Club Welfare Officer</b>	Caroline Hughes 07787 131698 <a href="mailto:welfare.cransleysailingclub@gmail.com">welfare.cransleysailingclub@gmail.com</a>
<b>Additional Contact</b>	<a href="mailto:commodore.cransleysailingclub@gmail.com">commodore.cransleysailingclub@gmail.com</a>
<b>Police Emergency</b>	999
<b>Police Non-Emergency</b>	101
<b>Local Authority Childrens Services</b> (to report a concern about a child)	Northants Safeguarding Children Partnership (NSCP) 0300 126 7000 <a href="mailto:northamptonshirescb@org.uk">northamptonshirescb@org.uk</a>
<b>Local Authority Designated Officer</b> (to report a concern about an adult volunteer working with children)	Sheila Kempster (May 2024) 07831 123193 Mon to Fri 2-5pm or leave voicemail 01604 392993
<b>Local Authority Adults Services</b>	Northamptonshire Adult Social Care 0300 126 7000 (Press option 1, opt 2, opt 1) <a href="http://northnorthants.gov.uk">northnorthants.gov.uk</a>
<b>RYA Safeguarding Team</b> Office Opening hours: <ul style="list-style-type: none"> <li>• 09:00-17:00 Monday to Friday</li> </ul> Out of Hours Service (Urgent enquiries which cannot wait) <ul style="list-style-type: none"> <li>• 17:00-22:00 Monday to Friday</li> <li>• 09:00-22:00 Bank Holidays</li> </ul>	02380 012796 (Choose option 1 for Safeguarding and Option 3 for out of hours service) <a href="mailto:safeguarding@rya.org.uk">safeguarding@rya.org.uk</a>
<b>RYA Legal Team</b>	<a href="mailto:legal@rya.org.uk">legal@rya.org.uk</a>

## **2. Safeguarding Reporting Procedure**

**If you have a concern about the safety or welfare of a child, young person, adult or adult at risk, please follow the advice given in the flowcharts on the next two pages.**

Please do not doubt or delay if you have a concern to pass on, as sometimes what has been heard or seen can be the piece of jigsaw that enables a child or adult to be kept safe.

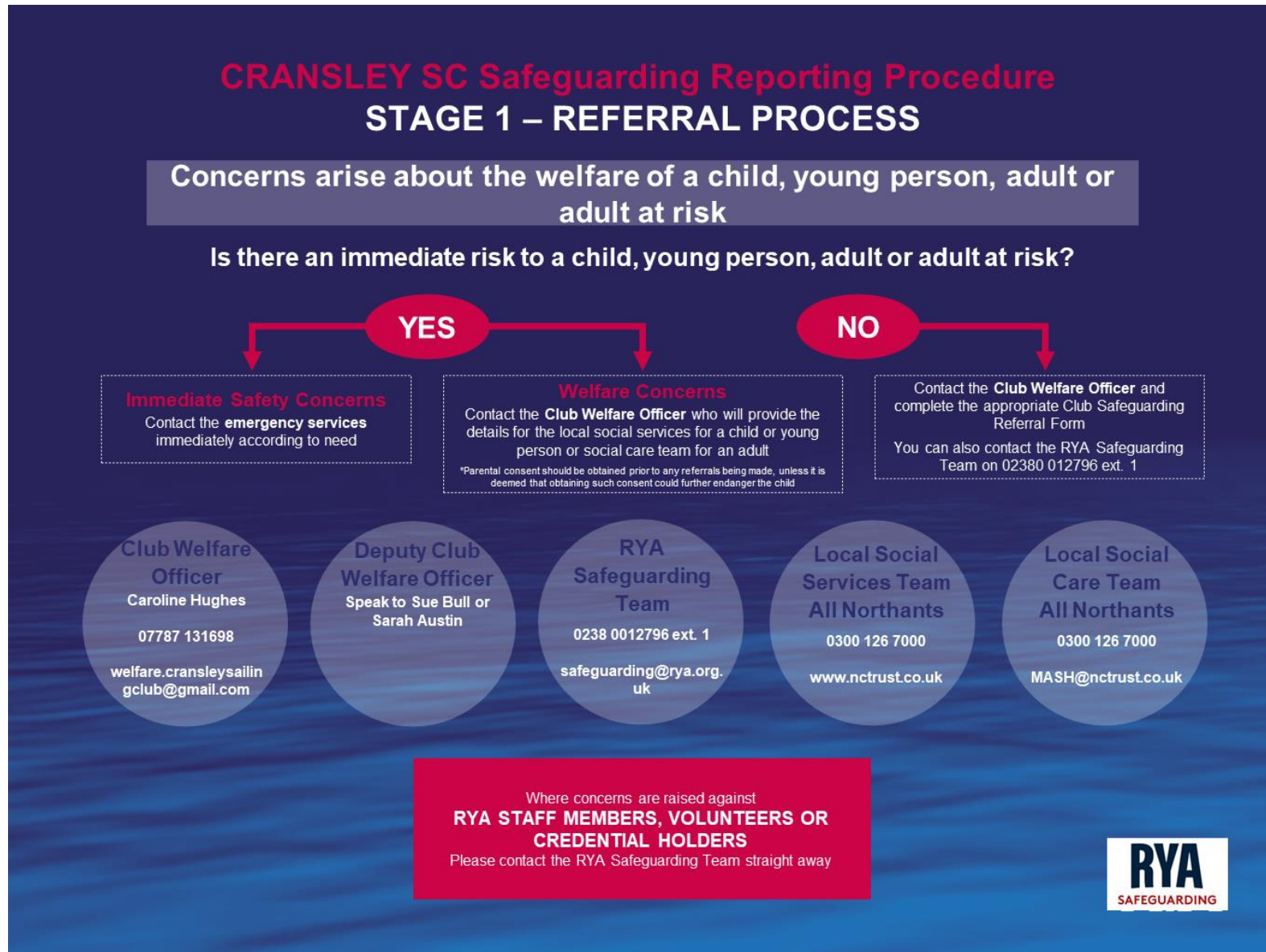
If you are not sure that your concern is important or significant to report, please call or email Caroline Hughes, the Club's trained Welfare Officer, for an informal chat. Emails sent to the CWO at [welfare.cransleysailingclub@gmail.com](mailto:welfare.cransleysailingclub@gmail.com) are confidential. Members can also speak with Sue Bull or Sarah Austin for guidance.

When emailing about a concern, please type the words 'Safeguarding Concern' in the subject box and do not add any personal information in the message about the person or concern you wish to discuss.

Thank you

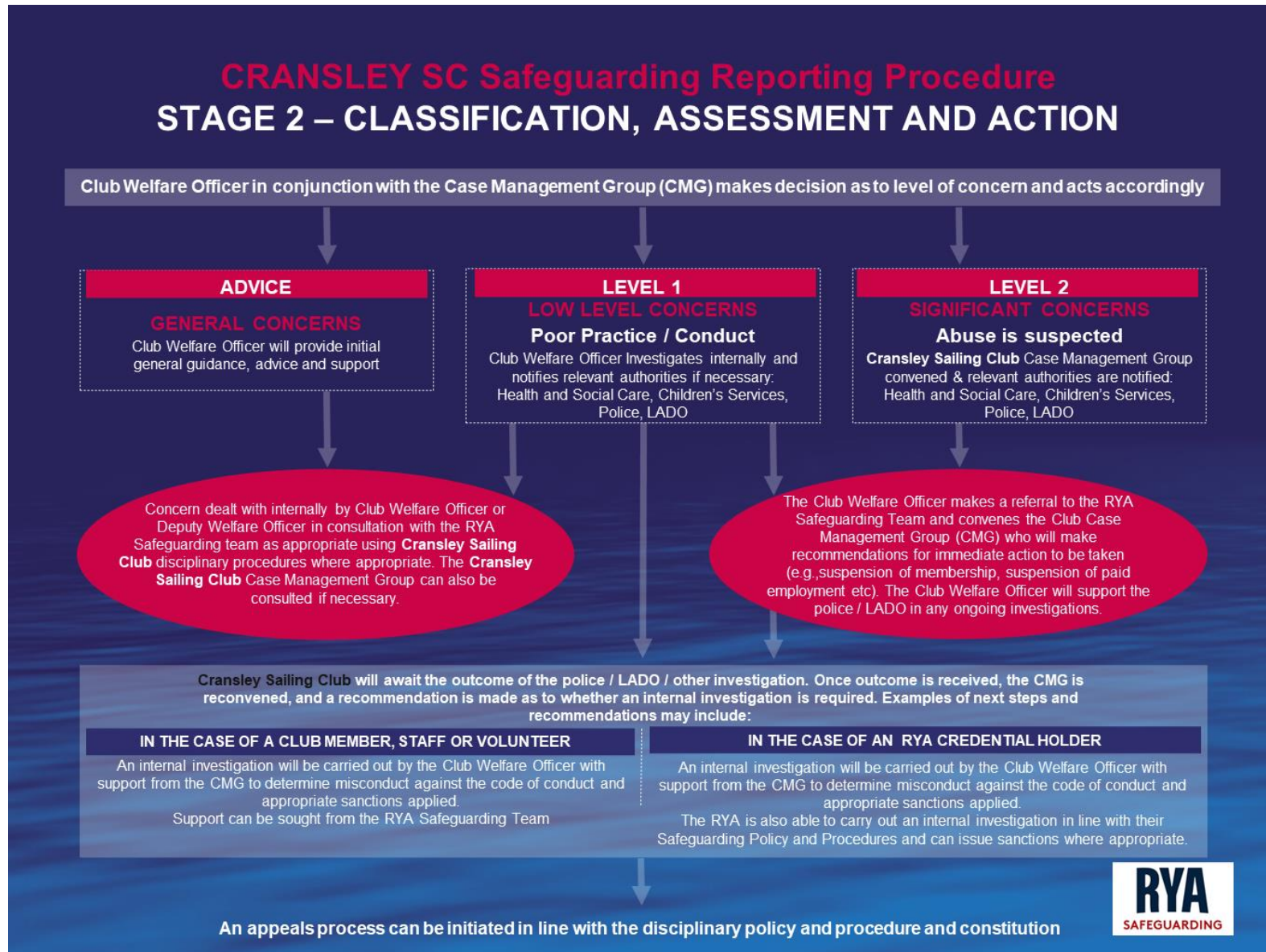
Please also be aware that the safeguarding process in a formal document such as this may appear daunting or excessive. However, it is important that as a club we are clear about the actions that will be taken if a concern is raised. Most, but not all, concerns are classed as general, involving poor practice or conduct. Serious concerns involving abuse are thankfully rare, but they do happen and we have a shared responsibility to act correctly and to follow a clear and fair process at all times.

**STAGE 1 explains the referral process – how to report a concern**





**Stage 2 explains how a concern is assessed and what happens next**





### **3. Breaches of the Safeguarding Policy**

Where there are concerns that this safeguarding policy has not been followed, or there is a safeguarding concern, all members, volunteers and participants are encouraged in the first instance to contact the named Club Welfare Officer. If further support or guidance is required, the RYA Safeguarding Team can be contacted on 02380 012796 or [safeguarding@rya.org.uk](mailto:safeguarding@rya.org.uk). Alternatively, the NSPCC Whistleblowing advice line can be contacted on 0800 028 0285 or [help@nspcc.org.uk](mailto:help@nspcc.org.uk)

Breaches of this Safeguarding Policy and/or failure to comply with the outlined responsibilities within it may result in disciplinary action.

### **Implementation, Review and Reporting**

*Cransley Sailing Club* Committee have overall accountability for this Policy and for its implementation.

The Club Welfare Officer for *Cransley Sailing Club* is responsible for updating this Policy in line with legislative and organisational developments.

All volunteers, members and participants are responsible for raising safeguarding concerns or disclosures with the Club Welfare Officer or senior club officials as outlined in the Reporting a Safeguarding Concern Procedure (see flowchart Part 3.2).

If appropriate, a safeguarding case management group (SCMG) will be appointed.

The Club Welfare Officer with support from Senior Club Officials is responsible for ensuring appropriate safeguarding training is put in place, specifically for those deemed to be in regulated activity with vulnerable groups, and kept up to date with any safeguarding developments.

#### **Where there is a safeguarding concern or disclosure:**

The individual who is told about, hears, or is made aware of the concern or disclosure is responsible for following the Reporting a Safeguarding Concern Procedure.

The Club Welfare Officer is responsible for assessing all safeguarding concerns or disclosures that are reported to them and collaborating with the RYA Safeguarding Team to follow up as appropriate on a case-by-case basis, always prioritising the well-being of all those involved in the disclosure. Dependent on the concern or disclosure, a referral may be made to:

- The Police in an emergency (999)
- Local Authority Children's Social Care Services for concerns or disclosures about a child

- For referrals involving adults at risk – Local Authority Adult Social Care Services for concerns or disclosures about an adult at risk
- For referrals involving children and young people – Local Authority Designated Officer (LADO) (England, Wales) and the Criminal Records Disclosure Service<sup>6</sup> for concerns or disclosures about a member of staff, consultant, coach, official or volunteer in a Position of Trust.
- The RYA Safeguarding Team for all Level 1 and Level 2 categorised concerns

## **4. Implementation, Review and Reporting**

### **5.1 Case Management**

All safeguarding records are categorised to a level accordingly:

**Advice** Any concern which does not meet the threshold for Levels 1 or 2 and involves seeking support or guidance for a specific matter. Advice cases can often escalate depending on the situation.

**Level 1** Any concern about a named adult or child’s behaviour towards a child or adult at risk that does not meet the allegation threshold or is not otherwise serious enough to consider a referral to the Police, LADO, and or Children or Adult Services of a Local Authority. Concerns may arise from both within the sport and outside of it.

**Level 2** Any concern that meets the threshold for a referral to the Police, LADO, and or Children or Adult Services of a Local Authority. Alongside this an internal rating system can also be used of Low, Medium and High.

The threshold criteria outlined above is underpinned by guidance provided by the Child Protection in Sport Unit (CPSU).

Highly sensitive information contained within safeguarding case records are restricted to the Club Welfare Officer. If a case management group is convened, information pertaining to the concern will be shared securely and confidentially.

### **5.2 Data Storage**

All case records are stored in line with the *Cransley Sailing Club* Data Storage and Privacy Policies and relevant national legislation and guidance.

**Advice** All advice case data will be stored for **5 years** from the date the referral was received.

---

<sup>6</sup> Criminal Records Disclosure Service providers: England and Wales - Disclosure and Barring Service (DBS), Scotland - Protection of Vulnerable Groups (PVG) & Northern Ireland - AccessNI

- Level 1** All level 1 case data will be stored for **10 years** from the date the referral was received.
- Level 2** All level 2 case data will be stored for **90 years** from the date of birth of the subject of concern.

Case records are deleted / destroyed after the retention period set out above, unless the Club Welfare Officer decides that there is a reason to retain the information for a longer period.

### 5.3 Case Management Group

When appropriate, a *Cransley Sailing Club* safeguarding case management group (SCMG) is convened when a Level 2 referral is received. The group can also be convened if a Level 1 referral is serious enough in nature.

### 5.4 External Assistance

The *Cransley Sailing Club* Welfare Officer or SCMG may choose to appoint an external independent body to assist in any investigations where the following criteria is met:

- *Cransley Sailing Club* does not have the expertise or skill set required to undertake the investigation
- *Cransley Sailing Club* is under a conflict of interest
- The case is so complex by nature that a third party would be necessary to support or undertake the investigation

In the case where the SCMG chooses to instruct an independent body, it reserves the right to choose whichever independent body it deems most suitable given the circumstances. The *Cransley Sailing Club* Welfare Officer or SCMG will make such a decision on a case-by-case basis.

## **5. Safe Recruitment & Criminal Records Disclosure Checks**

*Cransley Sailing Club* is committed to ensuring that only those with the right motivations and suitability are recruited into positions involving regular contact with children, young people and adults at risk within its work and volunteer force. *Cransley Sailing Club* understands its legal responsibility within the Safeguarding Vulnerable Groups Act 2006, to ensure that all its volunteer recruitment practices are safe, fair and equal and allows it to identify, deter and reject volunteers who may be at risk of abusing vulnerable groups.

*Cransley Sailing Club* will:

Ensure the best possible volunteers are recruited based on their merits, abilities and suitability for the position.

Ensure that all applicants are considered equally and consistently, and that no applicant is treated unfairly based on any protected characteristics in compliance with the Equality Act 2010<sup>7</sup>.

Comply with all relevant legislation, recommendations and guidance including the statutory guidance published by the DfE (keeping children safe in education, the PREVENT Duty guidance) and any codes of practice published by any of the disclosure service providers.

Meet its commitment to safeguarding and promoting the welfare of children, young people and adults at risk by carrying out all necessary pre-employment checks (Note: as at May 2024 our members' club does not have employees).

*Cransley Sailing Club* uses the following safe recruitment practices with volunteers:

- All role descriptions are clear and concise and accurately set out the duties and responsibilities of the role
- Volunteers will be informed of the expectations of them in carrying out their role
- Where any position amounts to "regulated activity<sup>8</sup>" with children and or adults at risk an appropriate disclosure check for Child and Adult Workforce will be carried out which will include the Children's Barred List where appropriate, and an original certificate will be seen by the Club's Welfare Officer or Principal. Further information on Criminal Records Disclosures can be found in Part 4.
- Successful applicants in England and Wales will be encouraged to register with the DBS Update Service.
- Additional checks may be carried out if the applicant has lived or worked outside of the UK (certificate of good conduct, certificate of Sponsorship).

## **6. Dealing with a Safeguarding Disclosure & Information Sharing**

Being the recipient of a safeguarding disclosure can be incredibly difficult, especially if the recipient is not a Safeguarding Lead. However, choosing not to respond to a disclosure can **never** happen, regardless of how uncomfortable the recipient is. The Stages 1 & 2 referral flowcharts in Part 3.2 act as a guide to the physical steps that can be taken if a referral or disclosure is received. Below is a list of do's and don'ts to support anyone if they receive a disclosure.

---

<sup>7</sup> <https://www.legislation.gov.uk/ukpga/2010/15/contents>

<sup>8</sup> Regulated activity with adults: [ES573375\\_CCS156\\_CCS0318265556-1\\_NHS Eligibility Roles Leaflet Adults v2\\_EB.pdf \(publishing.service.gov.uk\)](#)

Regulated Activity with Children: [ES573374\\_CCS156\\_CCS0318265556-1\\_NHS Eligibility Roles Leaflet Children v3\\_EB.pdf \(publishing.service.gov.uk\)](#)

## Do's

- Keep calm and remain receptive and approachable
- Assess the situation, has a crime been committed? Do you need to contact the emergency services?
- Listen carefully and patiently without interrupting if possible and let the victim recount the details in their own time
- Use the victim's own words if you need to seek clarification
- If you need more information, use TED: Tell me... Explain to me... Describe to me...
- Acknowledge how difficult it must have been to disclose
- Reassure them that they have done the right thing in telling you and they are not to blame
- Let them know that you will do everything you can to help them
- Advise the victim what will happen next
- Make a written record as soon as you can
- Report the disclosure to the Club Welfare Officer or the RYA Safeguarding Team
- **Adults:** Gain consent from the victim to share the information<sup>9</sup> – If you feel that the adult does not have sufficient capacity to make a decision about sharing information, you should consider if breaking confidentiality is in the best interests of the victim<sup>10</sup> – see Part 2 “Assessing Capacity” – a flow chart created by the NHS
- **Children and Young People:** Gain consent from the parent / carer to share the information – Only speak with the parents / caregivers of the victim if this does not pose a risk to the child

## Don'ts

- Don't make a promise to keep secrets
- Don't ask leading questions or put words in the mouth of the victim
- Don't repeatedly ask the victim to repeat their disclosure
- Don't discuss the referral with anyone who does not need to know
- Don't be judgmental
- Never ignore what you have been told – **you must pass it on**
- Don't confront or contact the Subject of Concern<sup>11</sup>
- Don't remove or contaminate any evidence that may be present
- Never dismiss your concerns – even a gut feeling is worth reporting

## **7. Confidentiality:**

---

<sup>9</sup> Capacity: The ability to understand and make a decision when it needs to be made

<sup>10</sup> Further reading on mental capacity: <https://www.gov.uk/government/collections/mental-capacity-act-making-decisions>

<sup>11</sup> Subject of Concern - The person to whom the complaint or concern has been raised against

The sharing of personal information within an organisation is not prevented by law. While appropriate confidentiality should be maintained, it is important to make sure the right people within the organisation are informed if the circumstances require this which is outlined in the *Cransley Sailing Club* Privacy Policy. If you are the recipient of a safeguarding disclosure, contact the Club Welfare Officer who will advise on the next steps, which may or may not include sharing that information with external agencies, however the following considerations should be taken into account:

## 8.1 Children and Young People<sup>12</sup>

Information sharing is essential for effective safeguarding and promoting the welfare of children and young people. It is a key factor identified in many Serious Case Reviews (SCRs), where poor information sharing has resulted in missed opportunities to take action that keeps children and young people safe

### **There are seven golden rules to confidentiality and Information Sharing:**

1. Remember that the General Data Protection Regulation (GDPR), Data Protection Act 2018 and Human Rights law are not barriers to justified information sharing but provide a framework to ensure that personal information about living individuals is shared appropriately.
2. Be open and honest with the individual (and / or their family where appropriate) from the outset about why, what, how and with whom information will, or could, be shared, and seek their agreement, unless it is unsafe or inappropriate to do so.
3. Seek advice from other practitioners, or RYA Data Protection Officer, if you are in any doubt about sharing the information concerned, without disclosing the identity of the individual where possible.
4. Where possible, share information with consent, and where possible, respect the wishes of those who do not consent to having their information shared. Under the GDPR and Data Protection Act 2018 you may share information without consent if, in your judgement, sharing falls within a specified lawful basis to do so. You will need to base your judgement on the facts of the case. When you are sharing or requesting personal information from someone, be clear on the basis upon which you are doing so. Where you do not have consent, be mindful that an individual might not expect information to be shared. If you are in any doubt, contact the RYA Data Protection Officer.
5. Consider safety and well-being: base your information-sharing decisions on considerations of the safety and well-being of the individual and others who may be affected by their actions. Necessary, proportionate, relevant, adequate, accurate,

---

<sup>12</sup> Information was taken directly from the HM Government Information Sharing Guidance: [https://assets.publishing.service.gov.uk/government/uploads/system/uploads/attachment\\_data/file/721581/Information\\_sharing\\_advice\\_practitioners\\_safeguarding\\_services.pdf](https://assets.publishing.service.gov.uk/government/uploads/system/uploads/attachment_data/file/721581/Information_sharing_advice_practitioners_safeguarding_services.pdf)

timely and secure: ensure that the information you share is necessary for the purpose for which you are sharing it, is shared only with those individuals who need to have it, is accurate and up to date, is shared in a timely fashion, and is shared securely.

6. Keep a record of your decision and the reasons for it – whether it is to share information or not. If you decide to share, then record what you have shared, with whom and for what purpose.
7. Keep a record of your decision and the reasons for it – whether it is to share information or not. If you decide to share, then record what you have shared, with whom and for what purpose.

## 8.2 Confidentiality: Adults

Individuals may not give their consent to the sharing of safeguarding information for several reasons. For example, they may be frightened of reprisals, they may fear losing control, they may not trust social services or other partners, or they may fear that their relationship with the subject of concern will be damaged. Reassurance and appropriate support along with gentle persuasion may help to change their view on whether it is best to share information.

If a person refuses intervention to support them with a safeguarding concern, or requests that information about them is not shared with other safeguarding partners, their wishes should be respected. However, there are several circumstances where the person who has received the disclosure can reasonably override such a decision, including:

- the person lacks the mental capacity to make that decision – this must be properly explored and recorded in line with the Mental Capacity Act
- other people are, or may be, at risk, including children
- sharing the information could prevent a crime
- the alleged subject of concern has care and support needs and may also be at risk
- a serious crime has been committed
- volunteers or instructors/coaches are implicated
- the person has the mental capacity to make that decision, but they may be under duress or being coerced
- In cases of domestic abuse, if the risk is unreasonably high and meets the criteria for a multi-agency risk assessment referral
- a court order or other legal authority has requested the information.

If none of the above apply and the decision is not to share safeguarding information with other safeguarding partners, or not to intervene to safeguard the person:

- support the person to weigh up the risks and benefits of different options
- ensure they are aware of the level of risk and possible outcomes

- offer to arrange for them to have an advocate or peer supporter
- offer support for them to build confidence and self-esteem if necessary
- agree on and record the level of risk the person is taking
- record the reasons for not intervening or sharing information
- regularly review the situation
- try to build trust and use gentle persuasion to enable the person to better protect themselves.

If it is necessary to share information outside the organisation:

- explore the reasons for the person's objections – what are they worried about?
- explain the concern and why you think it is important to share the information
- tell the person who you would like to share the information with and why
- explain the benefits, to them or others, of sharing information – could they access better help and support?
- discuss the consequences of not sharing the information – could someone come to harm?
- reassure them that the information will not be shared with anyone who does not need to know
- reassure them that they are not alone, and that support is available to them.

If the person cannot be persuaded to give their consent, then, unless it is considered dangerous to do so, it should be explained to them that the information may be shared without consent in some situations (as set out above). The reasons should be given and recorded. The safeguarding principle of proportionality should underpin decisions about sharing information without consent, and decisions should be on a case-by-case basis.

If it is not clear that information should be shared outside the organisation, a conversation can be had with the Data Protection Officer or the safeguarding partners in the police or local authority without disclosing the identity of the person in the first instance. They can then advise on whether full disclosure is necessary without the consent of the person concerned.

It is very important that the risk of sharing information is also considered. In some cases, such as domestic violence or hate crime, it is possible that sharing information could increase the risk to the individual. Safeguarding partners need to work jointly to provide advice, support and protection to the individual to minimise the possibility of worsening the relationship or triggering retribution from the abuser.

[Safelives](#) (previously CAADA) provide resources for identifying the risk victims face including a Dash risk checklist, which is a risk assessment tool for practitioners who work with adult victims of domestic abuse. It offers a consistent approach to identifying those who are at high risk of harm and whose cases should be referred to a MARAC (multi-agency risk assessment conference) meeting to manage their risk. If there are concerns



about a risk to a child or children, then a referral to ensure that a full assessment of their safety and welfare needs to be made.

## Part 4: Additional Documents for Affiliated Clubs, Class Associations and Recognised Training Centres

These document templates from the RYA have been adapted for Cransley Sailing Club.

### 1. Photography and Filming Consent: Children and Young People

In accordance with our Safeguarding and Privacy policies, we will not permit photographs, video or other images of young people to be taken without consent. If the child is under 16, consent must be obtained from a parent/carer.

(If the child is 16 or over, it's good practice to inform parents that photographs and/or videos of their child may be used if the child has given consent.)

*Cransley Sailing Club* will take all steps to ensure these images are used solely for the purposes for which they are intended. If you become aware that these images are being used inappropriately, please inform us immediately.

Copies of the Declaration of Consent forms are available on the club website for **over 16s (child signature)** and for **under 16s** (parent/carer signature), renewed annually.

### 2. Safeguarding Referral Form

Paper copies are available in the clubhouse or from the Club Welfare Officer, alternatively please use the RYA online referral form here:

<https://www.rya.org.uk/about-us/policies/safeguarding/what-to-do-if-you-are-worried>

### 3. Code of Conduct

All on the water activity should be safe and fun for everyone. We all have a responsibility to role model positive behaviour and feel able to call out poor or inappropriate behaviour and empower others to do the same.

*Cransley Sailing Club* is committed to providing a culture which is safe, welcoming and inclusive for everyone who wishes to take part in our activities. It is for this reason we have established a code of conduct, which outlines the standards of behaviour that we expect from everyone participating in our activities and competitions.

Note: Failure to adhere to the Cransley Sailing Club Code of Conduct may result in the suspension or withdrawal of membership in accordance with the Cransley Sailing Club.

A copy of the Code of Conduct is available as a separate document on the website.

## 4. Equity Policy

\*The RYA now use the term "Equity" as this goes a step further than "Equality" when describing inclusive sports clubs. The term "Equity" aims to promote the idea that individual people sometimes might need an additional helping hand to get the things that enable them to feel as though they belong to a particular community – which could be described as "breaking down systemic barriers". The term "Equality" only suggests that people should get the same treatment, regardless of their individual circumstances.

A copy of the Equity Policy is available as a separate document on the website.

**Cransley Sailing Club** respects the rights, dignity and worth of every person and will treat everyone equitably within the context of our sport, regardless of religion or belief, gender reassignment, sexual orientation, sex, pregnancy & maternity, marriage & civil partnership, disability, race, and age.

**Cransley Sailing Club** is committed to everyone having the right to enjoy their sport in an environment free from the threat of discrimination, victimisation, intimidation, harassment and abuse. We will deal with any incidence of discriminatory behaviour seriously, according to our disciplinary procedures and will ensure that equity is incorporated across all aspects of our development.

**Cransley Sailing Club** acknowledges and adopts the following UK Sport statement for sports equality: *"Equality is about recognising and removing the barriers faced by people involved or wanting to be involved in sport. It is about changing the culture of sport to one that values diversity and enables the full involvement of disadvantaged groups in every aspect of sport"*.

**Cransley Sailing Club** will ensure that anyone accessing the sport will be:

- Able to participate to the full extent of their own ambitions and abilities
- Assured of an environment in which their rights, dignity and individual worth are respected
- Assured of participating in an environment in which individual differences and the contributions of all participants are recognised and valued.

All **Cransley Sailing Club** members have a shared responsibility to challenge any discriminatory language or behaviour and promote a fair and equitable environment for all.

End of Document.